

"RURALITIES TRAINING", designed to empower and equip Role Models and Replicators



RURALITIES: Empowering Rural Futures, Together

WELCOME TO RURALITIES

Introduction

Welcome to the 'Climate Smart, Ecosystem-Enhancing, and Knowledge-Based Rural Expertise and Training Centres' project, or RURALITIES in short. This innovative initiative is designed to transform the way rural communities engage and benefit from advancements in sustainable practices and technology. At its heart, RURALITIES is about empowering rural areas through knowledge and expertise. This project has received funding from the European Union's Horizon Europe research and innovation program under grant agreement no 101060876. UK participants in Horizon Europe Project RURALITIES are supported by UKRI grant numbers: 10051963 The Highlands and Islands Transport Partnership and 10050988 Earthwatch Europe.



Funded by
the European Union



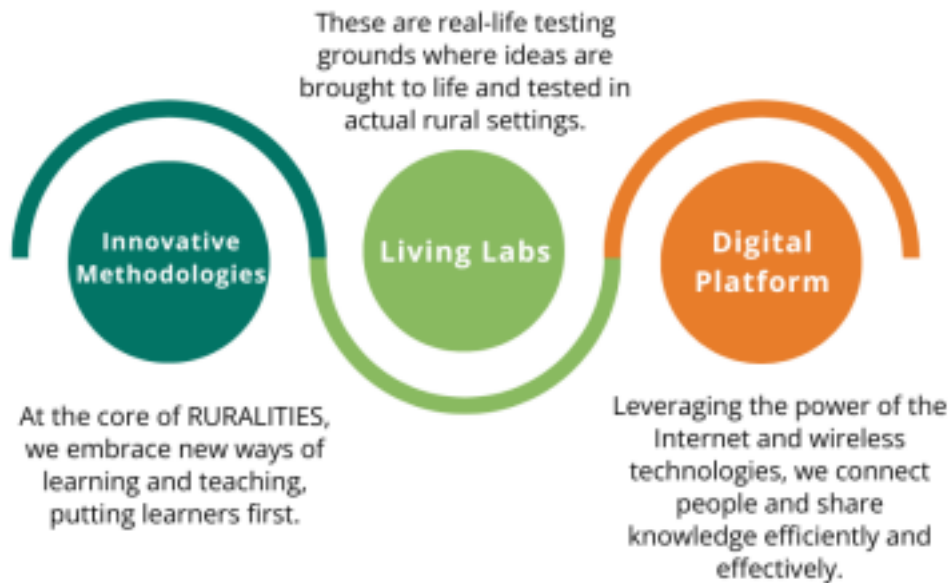
Innovate
UK

What is RURALITIES?

RURALITIES is a project that establishes a network of learning hubs, known as 'RURALITIES Hubs.' These hubs are the epicentres of learning and innovation, designed to enhance ecosystems and drive climate action in rural settings. The project uniquely combines various elements:



Ruralities elements



The Role of Facilitators and Role Models

A key to our approach is the deployment of over 1,000 facilitators across participating countries. These individuals are more than just trainers; they are coaches, role models, and hub coordinators. They are instrumental in weaving the network that supports our learning framework.

Real-Scale Practice in Simplified Rural Socio-Ecological Systems (SIMSES)

RURALITIES is not just theoretical; it's grounded in real-world practice. We have 6 SIMSES – or demonstration sites – spread across Italy, the United Kingdom, Slovenia, Spain, and Romania. These sites allow us to test, implement, and refine our approaches in genuine rural settings.

Our Goals

The ultimate goal of RURALITIES is to foster rural innovation. By connecting local and regional authorities and influencing policy, we aim to create a sustainable and resilient future for rural communities. Our training and expertise sharing across the RURALITIES Hubs are tailored to ensure that rural innovators are not left behind in the rapidly advancing world.

Join Us

As a part of RURALITIES Community, you are joining a movement that values rural communities and seeks to enhance them through education, innovation, and collaboration.

Welcome aboard on behalf of RURALITIES Project Consortium!



RURALITIES Project Ethos

.....4	WHO? - The
.....5	Role
.....5	Models.....5

Replicators	5
Their Link to RURALITIES Project	6
Diverse Rural Actors.....	7
Project Partners	7
WHERE? - The Pilot Areas and beyond.....	9
SIMSES (Simplified Rural Socio-Ecological Systems).....	9
Roles of SIMSES:.....	10
SIMSES of RURALITIES.....	11
Project Partner countries from Europe and Africa	12
WHAT? - Knowledge Alliance and RURAL Thrive 2050 campaign	13
Knowledge Exchange in the RURALITIES project.....	13
Rural Thrive 2050 Campaign: Driving Rural Sustainable Development	14
WHY? - Synergies, Problem-Solving, and Knowledge Building in the Rural Scene	16
1. Creating Synergies.....	16
2. Problem-Solving.....	17
3. Building Knowledge.....	17
HOW: Co-Creation and Knowledge Development in RURALITIES	18
1. Co-Creation	18
2. Utilising RURALITIES Resources	19
3. Knowledge Development.....	19
	OUTCOMES
.....	20
Augmented Knowledge Alliance.....	20
Rural Thrive 2050 Campaign.....	20
	The way forward
.....	22



RURALITIES Project Ethos



At the heart of the RURALITIES project lies a deep commitment to empowering rural communities through an innovative blend of sustainability, ecosystem enhancement, and knowledge sharing. Our ethos is built upon the following foundational pillars:

1. Sustainability as a Way of Life

We believe in fostering a sustainable future where rural communities thrive in harmony with the environment. Our actions and initiatives are driven by the pursuit of long-term ecological balance and resource efficiency.

2. Ecosystem Enhancement

Central to our mission is the enhancement of rural ecosystems. We champion practices that support biodiversity, soil health, water conservation, and overall ecological integrity. Our living labs and SIMSES are testaments to this commitment, serving as real-world examples of how rural landscapes can be rejuvenated and preserved for future generations.

3. Empowering through Knowledge

Knowledge is the cornerstone of progress. RURALITIES is dedicated to creating and disseminating knowledge that empowers rural innovators and communities. Through our network of hubs and digital platforms, we facilitate learning, skill development, and the exchange of best practices.

4. Collaborative Learning and Innovation

We believe in the power of collaboration. By bringing together facilitators, role models, local authorities, and community members, we create a dynamic environment where ideas flourish and innovation is nurtured.

5. Inclusivity and Accessibility

Inclusivity is at the core of our approach. We strive to make our resources, learning opportunities, and innovations accessible to all, regardless of their background or location.

6. Adapting to Future Challenges

The RURALITIES project is not static; it is a living, evolving initiative. We are committed to future-proofing our strategies and methodologies to adapt to new challenges and advancements in rural innovation.

7. Policy Alignment and Influence

Recognizing the importance of supportive policy frameworks, we actively work towards aligning our initiatives with regional and national policies, ensuring that our efforts are not only effective but also sustainable in the long run.



WHO? - The Involvement

Role Models

Role models are individuals who serve as examples to be emulated by others, particularly in terms of behaviour, attitudes, and successful achievements. They play a crucial part in setting standards and exemplifying positive traits.

Roles:

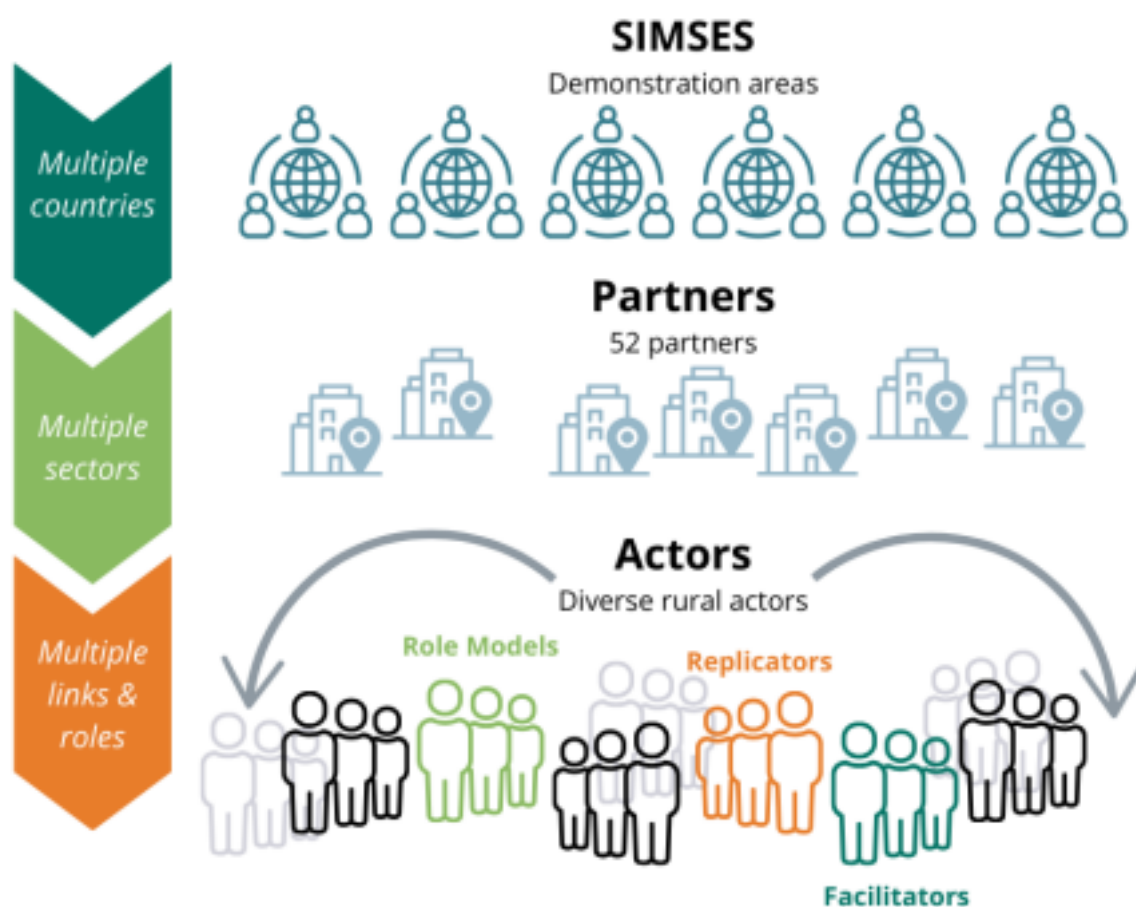
- **Inspiration and Motivation:** They inspire and motivate others by demonstrating what is possible through their own actions and achievements.
- **Guidance and Mentorship:** Role models often provide guidance and mentorship, sharing their experiences and wisdom.
- **Setting Standards:** They set standards of excellence and ethical behaviour in their respective fields or communities.
- **Influencing Change:** By leading by example, they influence others to adopt positive changes in their behaviour and attitudes.

Replicators

Replicators are individuals or entities that duplicate or replicate successful models, practices, or systems developed elsewhere. They adapt these models to new contexts or locations, ensuring that successful practices are widely disseminated and utilised.

Roles:

- **Adaptation and Implementation:** Replicators adapt successful models to new contexts, ensuring relevance and effectiveness.
- **Spreading Best Practices:** They play a key role in spreading best practices and innovations across different areas or communities.
- **Learning and Feedback:** Replicators contribute to the learning process by providing feedback on the implementation of replicated models, leading to improvements and refinements.
- **Creating Impact at Scale:** By replicating successful models, they help to create a broader impact, benefiting larger communities.



The Link to RURALITIES Project

In the context of the RURALITIES project, both role models and replicators have pivotal roles:



Role Models: These individuals will be key in demonstrating the efficacy of RURALITIES methodologies and practices. They will inspire and guide facilitators and local communities, showcasing how sustainable practices and innovative solutions can be successfully implemented in rural settings. Their real-life examples of success will be a driving force in motivating participants to embrace and implement project initiatives.



Replicators: These will be crucial in taking the successful practices and

learnings from the RURALITIES Hubs and adapting them to various rural contexts across the participating countries. They ensure that the innovations and methodologies developed in the project are not confined to the demonstration sites (SIMSES) but are spread widely, leading to a larger-scale impact. By adapting the RURALITIES model to diverse rural settings, they help in realising the project's vision on a broader scale.



Both roles are integral to the RURALITIES project, ensuring not just the adoption of new practices and technologies but also their adaptation and widespread implementation across diverse rural landscapes.

Diverse Rural Actors

Rural actors in the context of the RURALITIES project include a wide range of stakeholders within rural communities – from farmers, local business owners, and educators to community leaders and local government officials.



Roles of Rural Actors:

- **Implementation Partners:** Rural actors are key in implementing the practices and innovations proposed by the RURALITIES project within their communities.
- **Local Knowledge and Expertise:** They bring invaluable local knowledge and expertise, crucial for adapting project initiatives to local needs and conditions.
- **Community Engagement:** They play a significant role in engaging and mobilising the wider community, ensuring broader participation and support.
- **Feedback and Insights:** Rural actors provide essential feedback and insights, helping to tailor the project to be more effective and relevant to local contexts.
- **Sustainability and Continuity:** Their involvement is vital for the sustainability and long-term success of the project, ensuring that the initiatives continue to thrive beyond the project timeline.

Project Partners

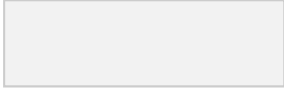
Project partners are essential collaborators in the RURALITIES project, representing a diverse group of organisations, institutions, and stakeholders committed to rural development and sustainability.

Roles of Project Partners:

- **Implementation:** Project partners actively participate in the implementation of the RURALITIES project's initiatives. They are instrumental in translating project concepts into actionable steps within their respective areas of expertise and geographic regions.
- **Knowledge and Expertise:** Leveraging their deep understanding of local conditions, project partners contribute invaluable local knowledge and expertise. This knowledge

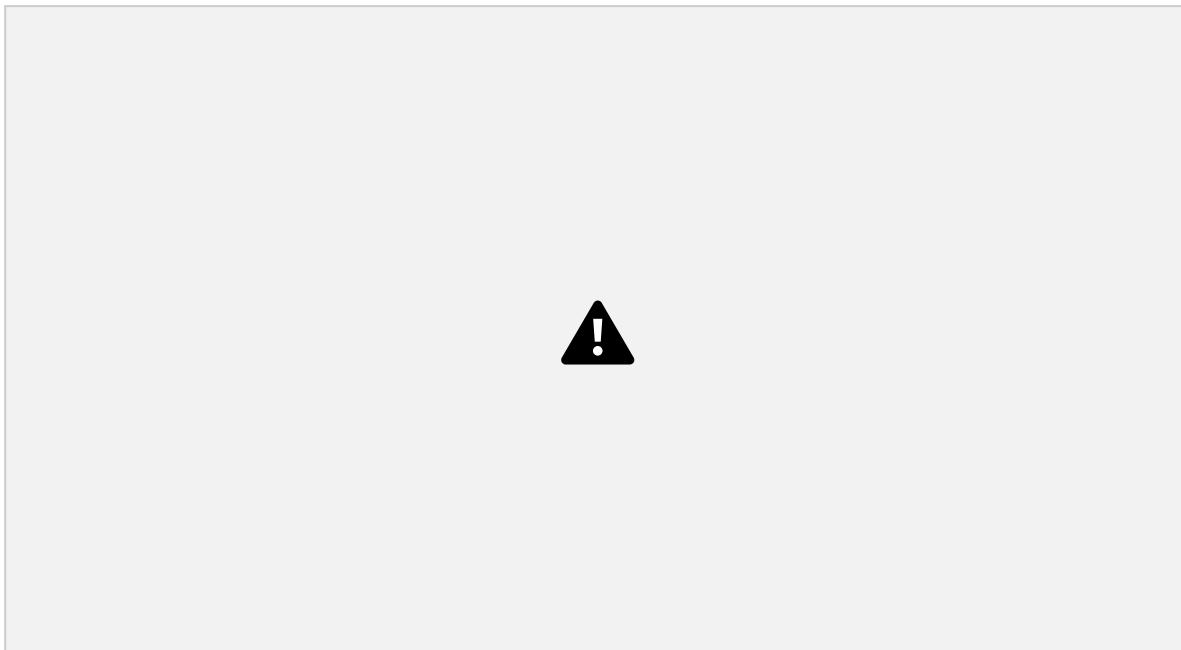
is indispensable for adapting project initiatives to the unique needs, cultures, and environments of rural areas.

- **Community Engagement:** Project partners are at the forefront of community engagement. They serve as liaisons between the project and local communities, fostering meaningful connections and mobilising community members to participate actively in project activities.



- **Innovation Integration:** Partners with a focus on innovation and technology play a crucial role in identifying cutting-edge solutions and integrating them into project initiatives.
- **Collaborative Network:** Project partners are part of a collaborative network that extends the reach and influence of the RURALITIES project. Their collective efforts, expertise, and resources create a powerful force for rural development and innovation.

In the RURALITIES project, we have the privilege of working with a diverse and dedicated group of partners from across the globe. Our team is made up of 52 partners in total, each bringing their own unique strengths and resources to the project. These partners come from various organisations, and together, we collaborate effectively to achieve our project goals.





WHERE? - Pilot Areas and Beyond

SIMSES (Simplified Rural Socio-Ecological Systems)

In the RURALITIES project, SIMSES refers to specific sites or areas selected for implementing and demonstrating the project's methodologies. These are real-world, operational environments where various aspects of the project are tested, refined, and showcased.

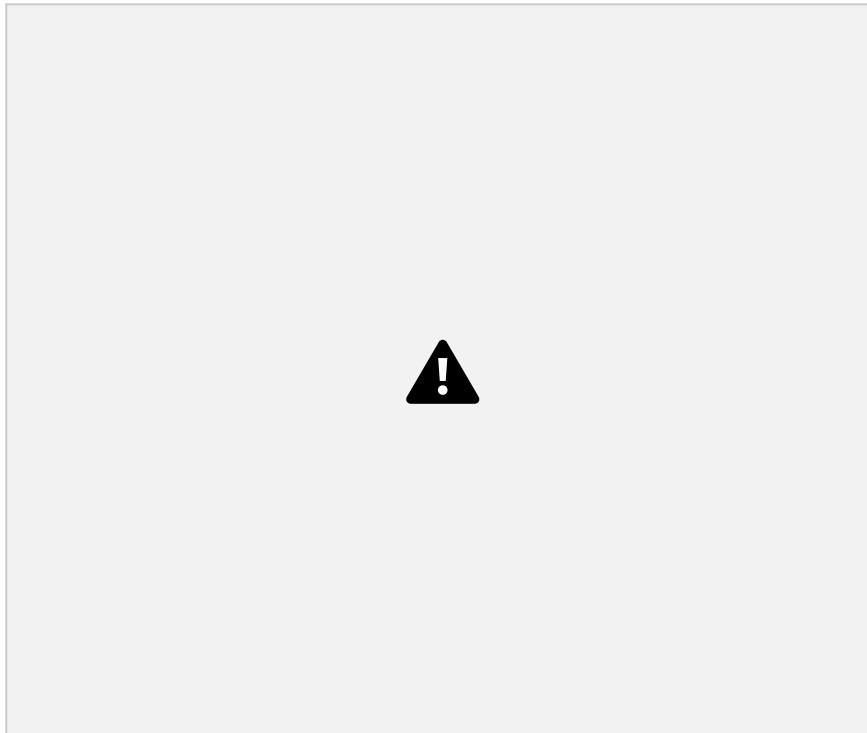
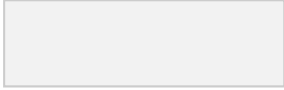


Roles of SIMSES:

- **Testing Grounds:** SIMSES serve as practical, real-life environments where new ideas, technologies, and methodologies can be tested and observed.
- **Demonstration Sites:** They act as showcases for successful practices, providing

tangible evidence of the project's impact and effectiveness.

- **Learning and Adaptation:** SIMSES are crucial for learning about the local ecosystem and community dynamics, allowing for the adaptation of practices to suit specific rural contexts.
- **Feedback Loop:** These sites provide continuous feedback, aiding in the refinement and improvement of project methodologies.
- **Engagement Platforms:** They serve as engagement platforms for local communities, stakeholders, and project participants, fostering collaboration and participation.

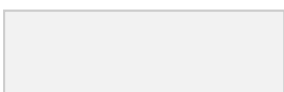


SIMSES of RURALITIES

Introduction to SIMSES (Simplified Rural Socioeconomic Systems): SIMSES, an acronym for Simplified Rural Socioeconomic Systems, represents a unique approach to understanding and analysing rural regions across different parts of the world. These systems provide a comprehensive framework for evaluating various aspects of rural areas, including their geographical features, population, economic activities, and development strategies. Within the RURALITIES project, SIMSES areas serve as focal points for in-depth exploration, enabling us to delve into the distinctive characteristics and challenges faced by rural communities.

Demonstration Areas of Project RURALITIES:

In the context of the RURALITIES project, 6 demonstration areas have been identified to showcase the diverse nature of SIMSES across different regions. These areas include:



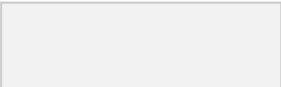
Asturias	Highlands & Islands	Iasi	Pesaro Urbino	Posavje	Veneto
----------	---------------------	------	---------------	---------	--------

In northwest Spain with a strong rural presence	Across multiple NUTS-3 regions in Scotland	Northeast development region of Romania	Located in the Marche region of Italy	Situated in south-eastern Slovenia	Within province of Vicenza in Italy
78 municipalities	Natural beauty	Balanced and sustainable growth as part of National Plan for Rural Development	52 municipalities	Emphasising sustainability, vitality and connectivity	19 municipalities
10,604.09 sq. km	38,955 sq. km	339.28 sq. km	2,567.71 sq. km	885 sq. km	2,722.45 sq. km
Population of 1,011,560	Population of 448,253	36,114 inhabitants	Unique provincial structure	75,807 inhabitants	Substantial population of 855,297

In summary, SIMSES are critical for the practical demonstration and adaptation of the RURALITIES project's methodologies, while rural actors are pivotal in implementing these methodologies, ensuring their relevance and sustainability within local communities. Both are integral to the success and impact of the RURALITIES project in enhancing rural innovation and sustainability.

Project Partner countries from Europe and Africa

RURALITIES is dedicated to ensuring that the valuable findings and insights gained from our Simplified Rural Socio-Ecological Systems (SIMSES) are not confined to demonstration areas alone. Our commitment extends to transferring these findings not only to the participating countries in the EU but also to our partners in Africa. This knowledge transfer is a cornerstone of our mission, and it will be achieved through a multi-faceted approach. We will actively engage with local communities, policymakers, and stakeholders in participating countries to ensure that the lessons learned and successful practices are integrated into regional and national policies. Moreover, our collaboration with African partners will facilitate the exchange of knowledge and best practices, empowering rural communities on a broader scale. This commitment to sharing and disseminating our findings underscores our dedication to global rural development and sustainability.



WHAT? - Knowledge Alliance and RURAL Thrive 2050 campaign

Knowledge Exchange in the RURALITIES project



One of the core pillars of the RURALITIES project is the establishment of the RURALITIES Knowledge Alliance. This alliance serves as a dynamic hub for knowledge creation, sharing, and distribution. It is a space where diverse skills and expertise converge to drive rural innovation and sustainability forward.

In this section, we will delve into the concept of knowledge exchange within the RURALITIES Knowledge Alliance. This exchange operates on a two-way street, encompassing both knowledge transfer to the alliance and the distribution of the knowledge base to rural actors through various channels.

1. Knowledge Transfer to RURALITIES Knowledge Alliance

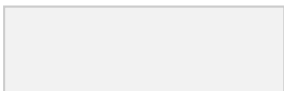
The RURALITIES Knowledge Alliance thrives on the wealth of knowledge contributed by role models and replicators like you. Here's how your expertise plays a vital role in enriching the alliance:

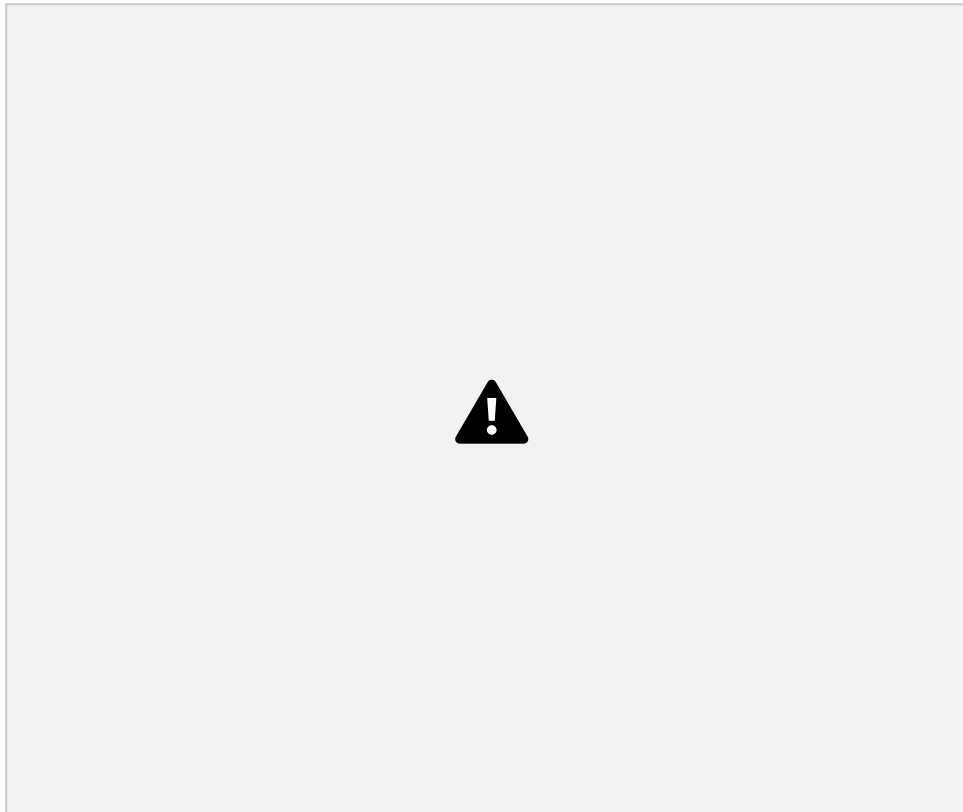
a. Sharing Your Expertise

Your diverse backgrounds, skills, and experiences are invaluable assets. As role models and replicators, you will contribute to the alliance by sharing your knowledge of rural development, transportation, eco-tourism, cultural heritage, agriculture, vocational education, and training and many more areas.

b. Feeding into the Alliance

Your insights will be integrated into the alliance's collective knowledge base. This knowledge will serve as the foundation for innovative methodologies, best practices, and strategies aimed at enhancing rural ecosystems and promoting climate-smart practices.





2. Distributing the Knowledge Base to Rural Actors

The knowledge generated within the RURALITIES Knowledge Alliance is not confined within its boundaries. It is meant to reach and benefit rural actors across different regions. Here's how this knowledge is distributed:

a. Multi-Channel Approach

The RURALITIES project adopts a multi-channel approach to disseminate knowledge. This includes traditional methods such as workshops, seminars, and presentations, as well as digital platforms, publications, and collaborations with local and regional authorities.

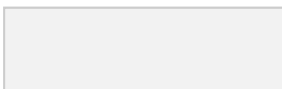
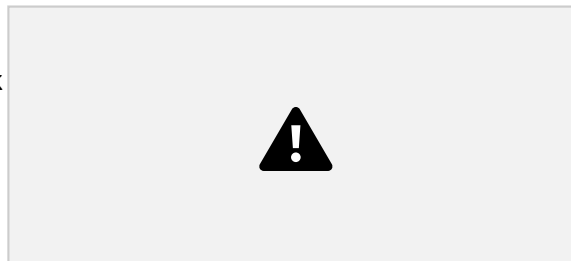
Rural Thrive 2050 Campaign: Driving Rural Sustainable Development

Introduction

The RURALITIES project is not only about innovation and knowledge exchange within its network but also about making a significant impact on a global scale.

One of the key components of this mission is the

transcontinental African Union and European Union campaign 'Rural Thrive 2050.' This campaign aims to drive rural sustainable development and aligns with the correlated EU agendas for 2030 and 2050.

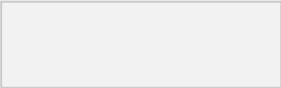


Your Role in Rural Thrive 2050

As role models and replicators, you play a pivotal role in the success of the Rural Thrive 2050 Campaign. Your involvement includes:

- **Participative Design:** Contributing to the co-creation process by sharing your expertise and insights.
- **Local Testing:** Actively participating in the testing phase, engaging with local communities, and ensuring the campaign resonates with rural actors.
- **Awareness Building:** Promoting the campaign's message, EU goals, and strategies for 2030 and 2050.
- **Knowledge Dissemination:** Sharing RURALITIES' evidence-based solutions, project results, and key findings to empower rural communities.

The Rural Thrive 2050 Campaign is a transformative journey that aligns with the vision of rural sustainable development. Your active involvement in all phases of the campaign will make a significant impact on raising awareness, driving change, and promoting the goals of 'Rural Thrive 2050.' Together, we will create a better future for rural communities.



WHY? - Synergies, Problem-Solving, and Knowledge Building in the Rural Scene

Understanding the 'why' behind our actions is crucial to driving meaningful change. In the context of the RURALITIES project, it's essential to grasp why creating synergies, solving problems, and building knowledge within the rural scene is of paramount importance. Let's explore the 'why' behind these endeavours.



1. Creating Synergies

Enhancing Impact

Why Synergies Matter: The challenges faced in rural areas often require comprehensive solutions that no single entity can provide. By creating synergies and collaborating with diverse stakeholders, we multiply our impact and address complex issues effectively.



Addressing Interconnected Challenges: Rural development encompasses multiple facets, from agriculture and education to transportation and sustainability. These challenges are interconnected. Synergies enable us to approach them holistically, achieving greater results.

Fostering Innovation

Why Synergies Matter: Innovation thrives when different perspectives, skills, and experiences come together. Synergistic collaborations spark creativity, leading to innovative solutions that can transform rural communities.

Breaking Silos: In rural development, siloed approaches limit progress. Synergies break down these silos, allowing knowledge and resources to flow freely, promoting holistic and innovative solutions.

2. Problem-Solving



Addressing Urgent Needs

Why Problem-Solving Matters: Rural areas often face pressing challenges, such as limited access to education, healthcare, and economic opportunities. Effective problem-solving is essential to address these needs promptly.

Improving Quality of Life: Solutions generated through problem-solving directly impact the quality of life in rural communities. They provide better access to essential services, enhance livelihoods, and promote sustainability.

Empowering Communities

Why Problem-Solving Matters: Empowering rural communities to actively participate in finding solutions fosters a sense of ownership and pride. It encourages self-reliance and resilience.

Building Sustainable Futures: Problem-solving isn't just about short-term fixes. It's about building the foundation for sustainable and thriving rural communities that can adapt to future challenges.



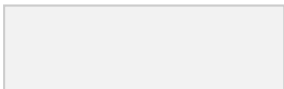
3. Building Knowledge

Leveraging Expertise

Why Building Knowledge Matters: Knowledge is a valuable resource. Building a repository of rural development knowledge empowers us to tap into the expertise of individuals and organisations, accelerating progress.

Continuous Improvement: A knowledge-rich environment enables continuous learning and improvement. It allows us to refine strategies, adopt best practices, and adapt to changing circumstances.

Amplifying Impact



Why Building Knowledge Matters: Knowledge is a multiplier. When shared and applied effectively, it amplifies the impact of our actions. It ensures that successes and lessons learned benefit a broader audience.

Informing Policy and Decision-Making: Informed decision-making is essential for policy development. Building knowledge provides evidence-based insights that can influence policies favourably for rural development.

The 'why' behind creating synergies, solving problems, and building knowledge in the rural scene is clear: to drive positive change, enhance impact, and empower rural communities. As role models and replicators, your active engagement in these endeavours is not only essential but also transformative. Together, we will be catalysts for rural innovation, sustainability, and prosperity.

HOW? - Co-Creation and Knowledge Development in RURALITIES

To achieve the ambitious goals of the RURALITIES project, it is essential to understand how co-creation, the utilisation of project resources, and knowledge development will be facilitated. This section provides insights into the "how" aspect of our journey.

1. Co-Creation



a. Multi-Actor Approach

Diverse Stakeholders: Co-creation in RURALITIES thrives on involving diverse stakeholders, including role models, replicators, local communities, experts, and policymakers. This multi-actor approach ensures a rich tapestry of perspectives and expertise.

Participative Workshops and Seminars: We will host participative workshops, seminars, and interactive sessions where ideas will be shared, discussed, and refined collaboratively. Your input is invaluable in shaping the project's direction.



b. Collaborative Decision-Making

Consensus Building: Decision-making will be a collaborative effort, with consensus-building as a core principle. We aim to create solutions that resonate with all stakeholders, fostering a sense of ownership and commitment.

Iterative Process: Co-creation is an iterative process. We value feedback and will use it to refine and improve project methodologies and strategies.

2. Utilising RURALITIES Resources

a. Knowledge Alliance

Central Hub: The RURALITIES Knowledge Alliance serves as the central hub for knowledge creation and sharing. It's a dynamic space where insights from diverse fields, including transportation, eco-tourism, cultural heritage, agriculture, vocational education, and training, converge.

Knowledge Integration: Your expertise will be integrated into the alliance's knowledge base, enriching it with practical insights and experiences.

b. Supportive Ecosystem

Living Labs: RURALITIES leverages a network of living labs, enabling real-scale practice and experimentation. These labs serve as testbeds for innovative methodologies and solutions.



Digital Platform: Our digital platform combines internet and wireless technologies to connect and empower actors. It serves as a bridge for knowledge exchange and collaboration.

3. Knowledge Development

a. Continuous Learning

Training and Workshops: The project offers a range of training programs, workshops, and seminars to enhance your skills and knowledge. These sessions are tailored to equip you with the information you need to contribute effectively.



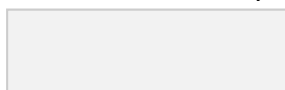
Peer Learning: Peer-to-peer learning is encouraged. Engaging with fellow role models and replicators can be a valuable source of knowledge exchange.

b. Access to Resources

Information Gathering: You will actively collect information from the areas you work in, participate in events, and stay updated on relevant developments. This information feeds into the alliance's knowledge base.

Resources: The project provides access to a wealth of resources, including guides, toolkits, and publications, to support your role in knowledge development.

The "how" of co-creation, resource utilisation, and knowledge development in RURALITIES is rooted in collaboration, inclusivity, and a commitment to continuous learning. By actively participating in this process, you become a driving force behind the project's success, ultimately contributing to the betterment of rural communities.

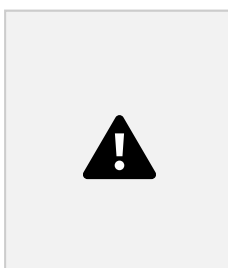


OUTCOMES

Augmented Knowledge Alliance

The Augmented Knowledge Alliance within the RURALITIES project is poised to achieve significant outcomes:

Knowledge Enrichment: The alliance serves as a dynamic hub for



knowledge creation, sharing, and exchange. As role models and replicators contribute their expertise, the alliance's knowledge base grows richer.

Innovative Methodologies: Insights gathered within the alliance are translated into innovative methodologies, best practices, and strategies. These innovations drive rural ecosystem enhancement and climate-smart practices.

Alignment with Rural Thrive 2050: Through active participation, the alliance ensures that it aligns with the transcontinental AU-EU campaign 'Rural Thrive 2050.' This alignment strengthens the campaign's impact and reach.

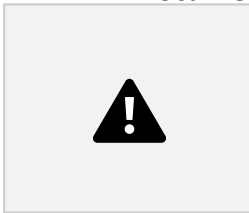


Rural Thrive 2050 Campaign

The 'Rural Thrive 2050' Campaign is set to achieve transformative outcomes:

Participative Design: The campaign's participative design phase involves multi-actor collaboration. Diverse stakeholders contribute to shaping a campaign that resonates with rural communities.

Local Testing and Engagement: By engaging 50,000 to 100,000 individuals in testing, the campaign ensures its relevance and effectiveness at the grassroots level.

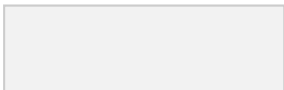


Awareness and Advocacy: Rural Thrive 2050 raises awareness about rural sustainable development and amplifies EU goals and strategies for 2030 and 2050. It advocates for positive change in rural areas.

A Living Resource for Dissemination

RURALITIES is not confined to a project's timeline; it leaves a lasting legacy:

Sustainable Knowledge Hub: The Augmented Knowledge Alliance continues to thrive, enriching its knowledge base even beyond the project's completion.



Ongoing Campaign Impact: The Rural Thrive 2050 Campaign remains an enduring force, promoting rural sustainable development and disseminating evidence-based solutions.

Empowering Rural Communities: RURALITIES' impact extends to rural actors who benefit from ongoing knowledge dissemination and advocacy.

The outcomes of RURALITIES extend far beyond its project duration. The Augmented Knowledge Alliance, Rural Thrive 2050 Campaign, and the enduring legacy of RURALITIES continue to empower rural communities, drive innovation, and advocate for a sustainable rural future.



THE WAY FORWARD

Remember, you are not alone. You are part of a supportive and dynamic network. Reach out to fellow actors, collaborate, and together, we will make a lasting impact on rural development, sustainability, and innovation.



Let's be the change-makers, the innovators, and the advocates for rural thrive. The future of rural communities depends on us, and together, we can create a brighter, more sustainable tomorrow.

Thank you for your commitment to the RURALITIES project. Let's go out there and make a difference!

 <https://www.ruralities-project.eu/>

 Ruralities Project  Project RURALITIES  @ruralities52  @Ruralities52